

LumiFACE USB-DMX Interface



LumiCRAFT

Specifications

Chipset:	FTDI-232
DMX CH Hold:	no
Connections	
Input:	USB type B socket
Output:	3-pin XLR (female)
Power	
Power supply:	USB bus +5V
Consumption:	max. 80mW
General	
Size LxWxH:	75x37x35mm
Weight:	0.13 kg (net)

OEM options

- Top Panel user interface printing
- Packaging artwork

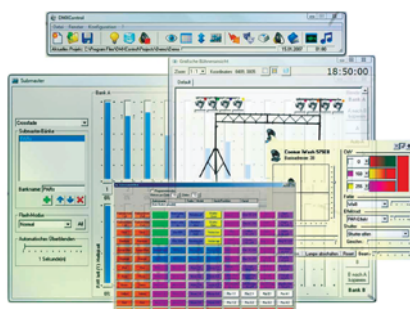
If you are on a budget and still want the best lightshow for your money, then Lumicraft is the fixture brand to look for – however, how to get your show controlled and programmed? We wouldn't be the most innovative budget lighting manufacturer if we would not have a solution: the **Lumicraft LumiFACE** USB-to-DMX interface, combined with one of the best PC-based DMX freeware programs that the software scene has to offer – **DMX CONTROL**. Simply plug the USB-powered LumiFace into one of your USB ports, connect your lighting rig to the DMX output, start DMX control and you are good to go – whether you serve a live concert, a theatre performance, a party or you need control for architectural illumination.

Hardware Features

- USB-powered DMX interface, Open DMX standard (FTDI based)
- RDM-enabled
- Control LEDs for USB bus power and DMX signal
- USB type B input socket
- 3-Pin female DMX output connector (locking)
- Rugged all-metal case with connector protection flanges and mounting holes

Software Features

- Supports 512 DMX channels
- Manual show control with fader-style user interface plus cross-fader
- Automated show control with scene and scene sequence programming
- Sound-to-light
- Large device library
- Graphical DDF creator for new device definitions
- Graphical illustration of stage setting
- Interface to "Magic 3D EasyView"
- System requirements:
Windows 97 / 98SE / ME / 2000 / XP / Vista
CPU min. PIII 800MHz
512 MB memory
- Download the latest version www.dmxcontrol.de



NOTE: IBM, Microsoft, Microsoft Windows, USB, Open DMX and DMX Control are trademarks of their respective owners.



USB Input



DMX Output



Control LEDs

